

COURSE OUTLINE

Welcome to English 9 with Ms. Citton.

The year will be spent solidifying and practicing many of the skills learned in Grade 8. Students will also create a solid foundation in literary appreciation and analysis. The language skills of reading, writing, speaking, viewing, and researching will be developed through a variety of written, oral, and visual assignments. Writing will be on the front burner and a major component of English 9.

Students will complete activities and writing assignments that relate to real-life. The skills learned throughout the year will set students up for success in their senior grades.

Units

Express and Reflect

In this unit, students will learn the difference between expressive and reflective writing.

Inform and Explain

The ability to inform and explain through writing is a life-skill students need to make it, not only through school, but in life as well.

Evaluate and Judge

Which car should I buy? Which university should I attend? Which story has the better protagonist?

Inquire and Explore

In many classes, students write to "show what they know." In this unit, students will write without a specific end in mind and wrestle with a question or problem that eventually they may wish to research further.

Analyze and Interpret

"We all know that Jack and Jill went up the hill to fetch a pail of water, but do you know why Jack fell down and broke his crown? Or why Jill came tumbling after?"¹ Students who can analyze and interpret literature and the world will be more aware of purpose and bias as they continue through life.

Take a Stand/Propose a Solution

This year's Speech Arts competition will take place on April 1st. As usual, students will prepare an argumentative and persuasive speech/essay. This type of writing and thinking allow students to have and develop their voice.



Class Structure

This year, English 9 with Ms. Citton will look and sound a lot like the NHL hockey season. Students will be put into teams where they will work together and individually to earn points. These points will be used to determine the winners of the first official NDEL. Prizes to be determined by the winning team.

The Play

Classes will be divided into **Practices** and **Games**. Please check the schedule regularly for game changes and expectations.

Practices will consist of daily activities and lessons that will build knowledge and skill. At practice, students are expected to come prepared: with the proper equipment (pens, pencils, books etc.) and the proper attitude. Students who miss practice are responsible for finding out what was missed as well as homework that may be due the following class. Assessments during practices will include: quizzes, homework checks and in-class activities.

Games are more formal and as such, students will be held to a higher standard. Attendance is **MANDATORY** on game days; students who miss a game are responsible for talking to the coach and making up play time. Students are expected to be in full uniform, and come prepared. Games will consist of unit tests, project due dates, presentations and in-class essays.



The Point System

Points will be awarded for both good behavior and academic achievement. Students will work together as a team as well as individuals to earn points.

Game Points

Game days consist of Summative Assessments and therefore come with a grade. Each grade has a different point value.

- A.....10 points
- B.....8 points
- C.....5 points*
- D..... -1 points*
- F..... -2 points*

Practice Points

Practices consist of Formative Assessments and daily activities. How to earn points:

Homework Checks..... 2 points

Completion of In-Class Activities..... 5 points

Penalties

In addition to the classroom rules created by the students and teacher, other penalties include:

Late to class..... -5 points

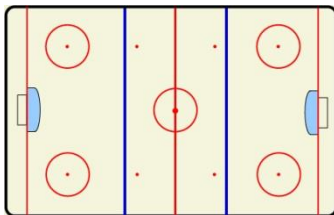
Unprepared for class..... -2 points

Earn More

Students who wish to earn more points for themselves and their team can do so by :

1. Declaring: UNDER REVIEW

*Students who receive a C letter grade (or lower) on formal assignments, can re-do the assignment in a timely manner using feedback.

2. Submitting outstanding assignments during REPLAY week (Mid November and Mid May)**The Rink and Penalty Box**

A standard hockey rink will be used to visualize tasks and expectations.

At Center Ice: the Assignment

The Blue Line: the Soft Due Date

Goal Crease: criteria and last minute checks before submission and scoring

Goal Line: Hard Due Date, submission, and grading

End Goal: each team member works to gain points/score for their whole team by working to complete all assigned tasks.

☞*The Soft Due Date:* if students wish to receive feedback prior to evaluation, they may submit their assignment to Ms. Citton ahead of time.



Classroom rules and consequences will be created by the students and teacher. Penalties will result in point deductions.



Assessment and Evaluation

40% Major Assessments: Midterm and Final Exam, Cross-Grade Original Compositions (x2), Speech/Persuasive Essay, Presentations and In-class Essays.

25% Medium Assessments: Work done over an extended period.

10% Minor Assessments: Routine class work (In-class Activities, Quizzes, Small Assignments)

25% Self-Assessment/Portfolio: Writing Log (2%), AR Points (8%), Individual Portfolio (15%).

Supplies

- 1 x 1½ -2 in. binder
- Dividers
- Pens – black, blue and red
- White out
- Pencil
- Eraser
- Notebook/Journal
- Lined Paper

Absences and Lates

Absences

Students are responsible for all missed work. If a student misses a test or assignment because of an unexcused absence, he/she will receive a mark of **zero**. Missed tests are to be written before or after school or at an arranged time.

All assignments and missed work will be on the website under the homework tab. Students are responsible for checking the website and completing missed work. Students should make every effort to return to class prepared. In order to do this, it is important that you contact me directly (in person or via email) or consult the course webpage **before** returning to class.

In the event of an extended absence, students are requested to bring a written explanation from their parents at least two weeks in advance.

Late to Class

Students will require a late slip to enter class after the second bell. Three lates will result in a detention.

Late Policy in regards to Assignments

There will be no mark penalty for late work until such time that the class work is marked and handed back. At this time, late assignments will not be accepted for marks.

Cell Phones and other Electronics

Cell phones and other electronic devices may be used only with the **permission of the teacher.**

Students may bring a personal lap top to class in order to complete in-class assignments; should students choose to bring their own computer, they are responsible for it.



Other:
